

The screenshot displays the Google Earth application window. The title bar reads "Google Earth". The menu bar includes "File", "Edit", "View", "Tools", "Add", and "Help".

Search Panel: Features tabs for "Fly To", "Find Businesses", and "Directions". A search input field contains the placeholder text "PARK ADDRESS".

Places Panel: Shows a tree view under "My Places".

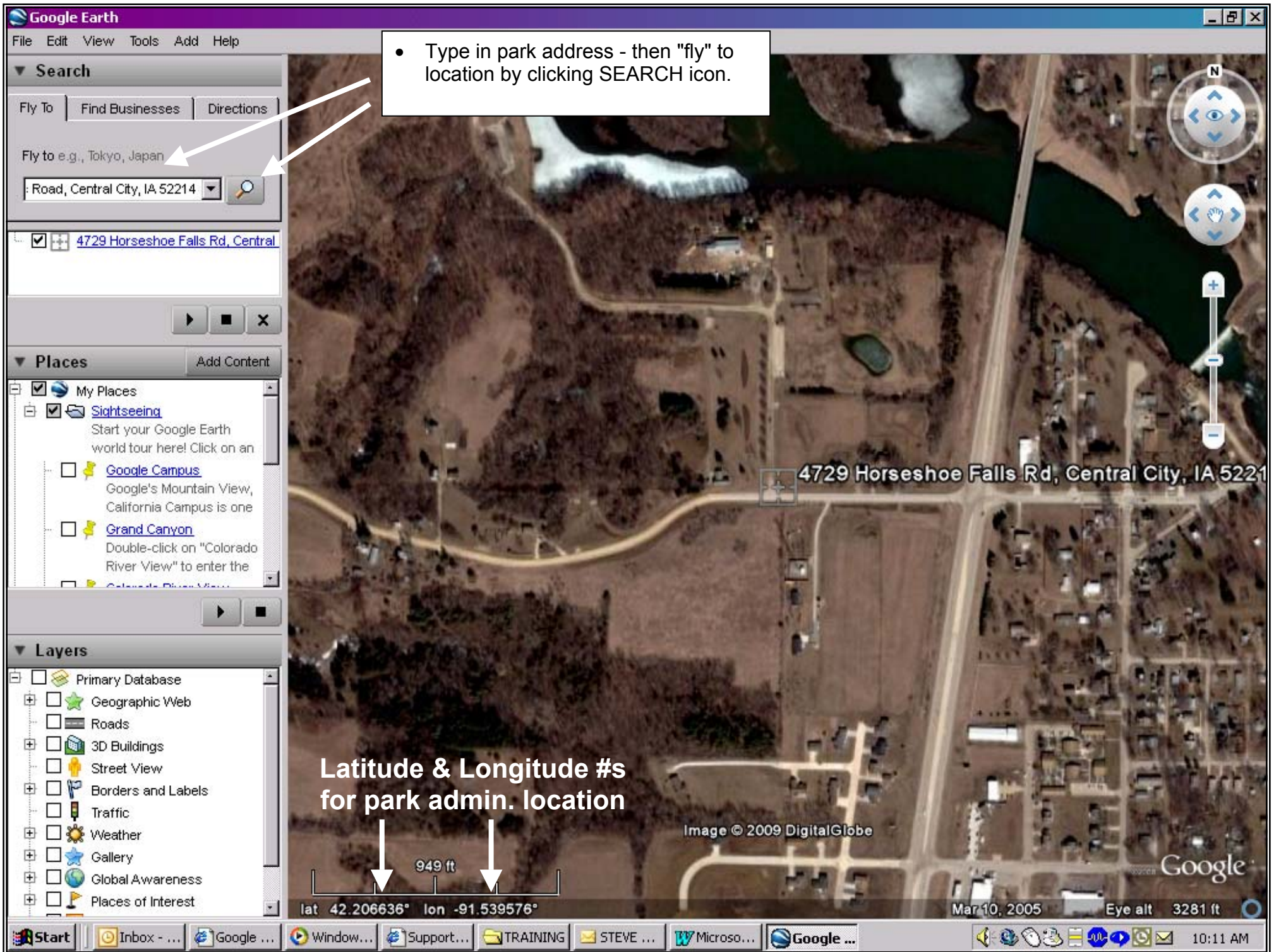
- Sightseeing
 - Start your Google Earth world tour here! Click on an
 - Google Campus
 - Google's Mountain View, California Campus is one
 - Grand Canyon
 - Double-click on "Colorado River View" to enter the
 - Colorado River View

Layers Panel: Lists various map layers with checkboxes:

- Primary Database
- Geographic Web
- Roads
- 3D Buildings
- Street View
- Borders and Labels
- Traffic
- Weather
- Gallery
- Global Awareness
- Places of Interest
- More

The main view shows a 3D globe of Earth. On the right side, there are navigation controls: a compass, a hand icon for panning, and a vertical zoom slider. At the bottom of the globe, text reads "Data SIO, NOAA, U.S. Navy, NGA, GEBCO" and "Image © 2009 TerraMetrics". The Google logo is in the bottom right corner of the map area. The status bar at the very bottom shows "Eye alt 6835.70 mi".

The Windows taskbar at the bottom includes the Start button and several open applications: "Inbox - Microsof...", "New Contact Re...", "LinkedIn Messag...", "Windows Media ...", and "Google Earth". The system tray on the right shows the time as "9:23 AM".



Edit Park - Pinicon Ridge Park, Linn County

[Edit Park](#) > Edit Park

Edit Park Manage Images Related Items Map

County Linn

Park Name *

Park Address

*Address 1 ** *Address 2*


*City ** *State ** *Zip **

Coordinates *

*Latitude ** *Longitude **

[? What's This?](#)

Description *

ABC 

This 925-acre park along the Wapsipinicon River has long been admired for its scenic natural beauty. The hilly, heavily wooded area is divided by the river and home to many species of wildlife. Beginning as a rural picnic ground in the 1960s, Pinicon Ridge Park has been developed into a modern recreation area - a regional destination for many outdoor enthusiasts.

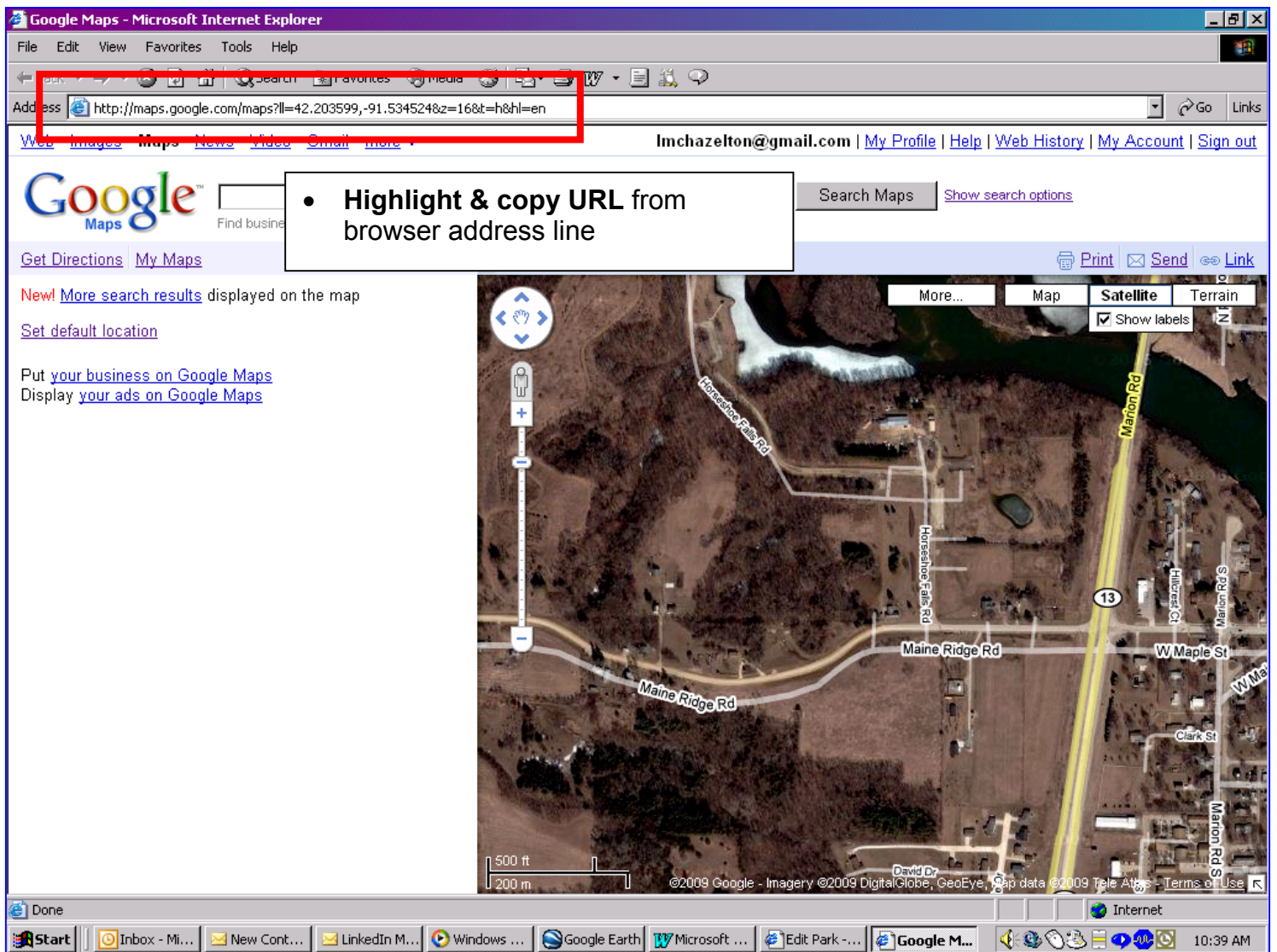
PARK CONTACT INFORMATION:

Pinicon Ridge Park

4729 Horseshoe Falls Road
Central City, IA 52214

PHONE: (319) 438-6616

WATERCRAFT CONCESSION: (319) 438-1961 (in season)



Edit Facility | Manage Images | Related Items | Activities | Amenities | Exclusion Dates | Prices | Rental Contract | Purchase History

County Linn **Park** Pinicon Ridge Park
Facility Name * Lodge - Horseshoe Falls **Display on Website *** Yes
Min. Check In 7:00 AM **Max Check Out** 10:00 PM
Custom Code (optional) _____ ex: xxx<xxx<xxx<xxxxxxxx<xxx **Max Occupancy *** 105
Type * Lodge **Reservable Facility? *** Yes

Description *

Horseshoe Falls Lodge opened in 1995, becoming the second enclosed lodge facility in Pinicon Ridge Park - joining the 1966 Woodpecker Lodge on Woodpecker Hill. It was built by Conservation Department staff, and is located in the former Horseshoe Falls Campground that was closed in the early 1990s. The name of the lodge comes from the nearby small waterfall along the Woodpecker Trail. A small limestone outcropping with a vertical drop of 4 feet or so received it's name from the local inhabitants in the mid-1900s as they would give tours of the scenic wooded hills and valleys along the Wapsipinicon River, passing by this diminutive waterfall on their travels.

To schedule a visit to the lodge to view the interior, please contact the Pinicon Ridge Park office at 715-838-3333.

- Create text to highlight for insertion of Google Map linkage
- Click on Hyperlink icon

Location * Location must be less than 2500 characters

Horseshoe Falls Lodge is located on Woodpecker Hill, just up the hill from the Riverside Shelter and playground complex, and below the location of the landmark Observation Tower. From Hwy 13, enter the park via the southern entrance on Horseshoe Falls Road off of main Main Ridge Road. Follow the signs to Woodpecker Hill - turning left off the main park road approximately one mile into the park. (This facility is not subject to flooding)

[GOOGLE MAP LOCATION](#)

- Click on "Get Directions"
- Right-click on Lodge
- Click on "Directions to Here"
- Enter your location

Custom Code (optional) _____ ex: xxx<xxx<xxx<xxxxxxxx<xxx Max Occupancy * 105 Reservable Facility? * Yes

Description *

Horseshoe Falls Lodge opened in 1995, becoming the second enclosed lodge facility in Pinicon Ridge Park - joining the 1966 Woodpecker Lodge on Woodpecker Hill. It was built by Conservation Department staff, and is located in the former Horseshoe Falls Campground that was closed in the early 1990s. The name of the lodge comes from the nearby small waterfall along the Woodpecker Trail. A small limestone outcropping with a vertical drop of 4 feet or so received it's name from the local inhabitants in the mid-1900s as they would give tours of the scenic wooded hills and valleys along the Wapsipinicon River, passing by this diminutive waterfall on their travels.

To schedule a visit to the lodge to view the interior, please contact the Pinicon Ridge Park office at 715-838-3333.

Hyperlink Manager

Hyperlink | Anchor | E-mail

Type http:

URL http://

Link Text Horseshoe Falls

Target New Window

Existing Anchor

Tooltip

CSS Class

Preset Targets

- None
- Same Window
- New Window**
- Parent Window
- Browser Window
- Search Pane
- Media Pane

Custom Targets

[add custom target...]

- Paste copied Google web address in **URL** line in the **HYPERLINK MANAGER** box
- In **TARGET** box, select **New Window**

Location * Location must be less than 2500 characters

Horseshoe Falls Lodge is located on Woodpecker Hill, just up the hill from the Riverside Shelter and playground complex, and below the location of the landmark Observation Tower. From Hwy 13, enter the park via the southern entrance on Horseshoe Falls Road off of main Main Ridge Road. Follow the signs to Woodpecker Hill - turning left off the main park road approximately one mile into the park. (This facility is not subject to flooding)

[GOOGLE MAP LOCATION](#)

- Click on "Get Directions"
- Right-click on Lodge
- Click on "Directions to Here"
- Enter your location

DONE!