



**Iowa  
Natural Heritage  
Foundation**

**County Conservation  
New Employee School**



 **Who We Are**

**Founded in 1979**  
Under Governor Robert Ray



**501(c)3 Not-for-Profit**  
Donor supported

 **Accredited Land Trust**  
Land Trust Accreditation Commission

Pic: Heritage Valley

pic: Governor Robert Ray with President Schnepf, Mr. Buckmaster and Mr. Young



Pic: Mines of Spain



## Where We Work

### Central Iowa

Des Moines

### Blufflands

Decorah

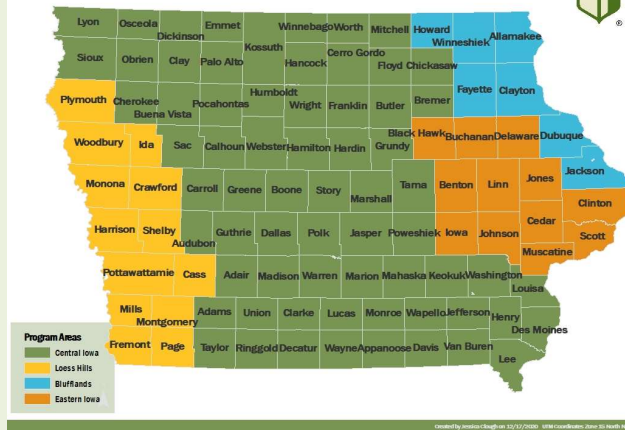
### Eastern Iowa

Cedar Rapids

### Loess Hills

Council Bluffs

### Iowa Natural Heritage Foundation





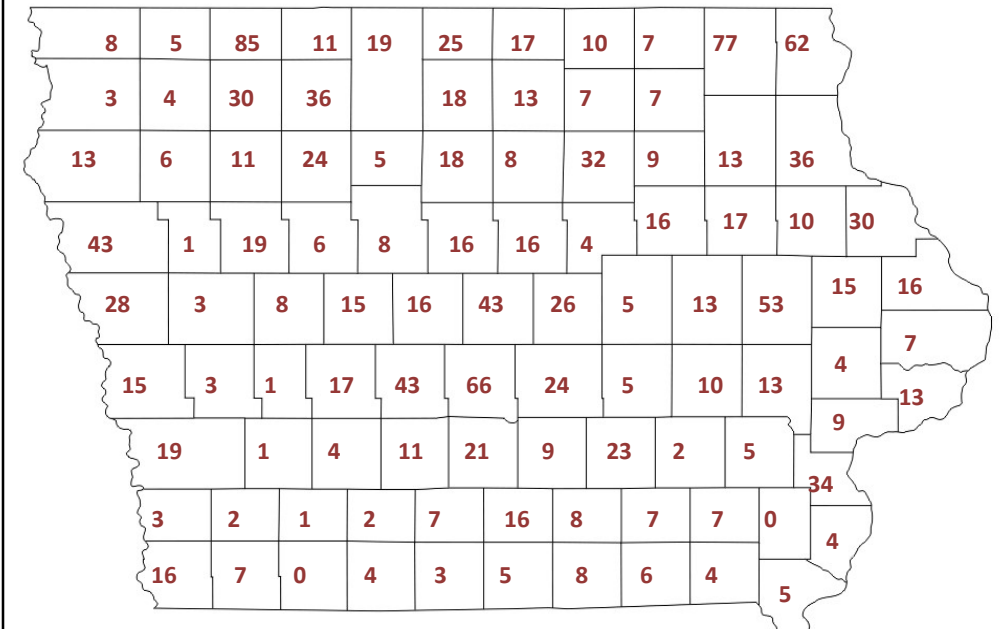
 **What We Do**

<b>Public Land</b>	<b>Private Land</b>	<b>Trails</b>
1,068 projects	227 Conservation Easements	700 miles
132,000+ acres protected	27,200+ acres protected	65% of rail trails

Pic: Loess Hills



## Where We've Been







Pic: Algeific slopes



Pic: Turin Prairie





## Conservation Easements

### Conservation Easement

The most popular and permanent way to protect the land's special features while retaining private ownership and use.

A voluntary, legal agreement between a landowner and a conservation organization permanently protecting the land.



Tailored to the property.

Documents current state of the property and the natural features.

Purpose- wildlife habitat, open space, scenic beauty, working land (ag)



## Donation of Land

### Complete Donation

The landowner gives their property directly to INHF or to another agency.

### With Reserved Life Estate

The landowner retains the use and responsibility for the property during their lifetime but transfers the deed to a different agency.





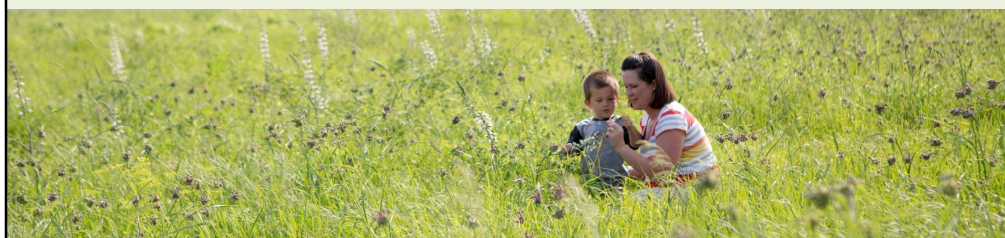
## Sale of Land

### **Bargain Sale**

Rather than sell at fair market value, bargain sellers may get a significant part of their donation returned in tax savings.

### **Fair Market Value Sale**

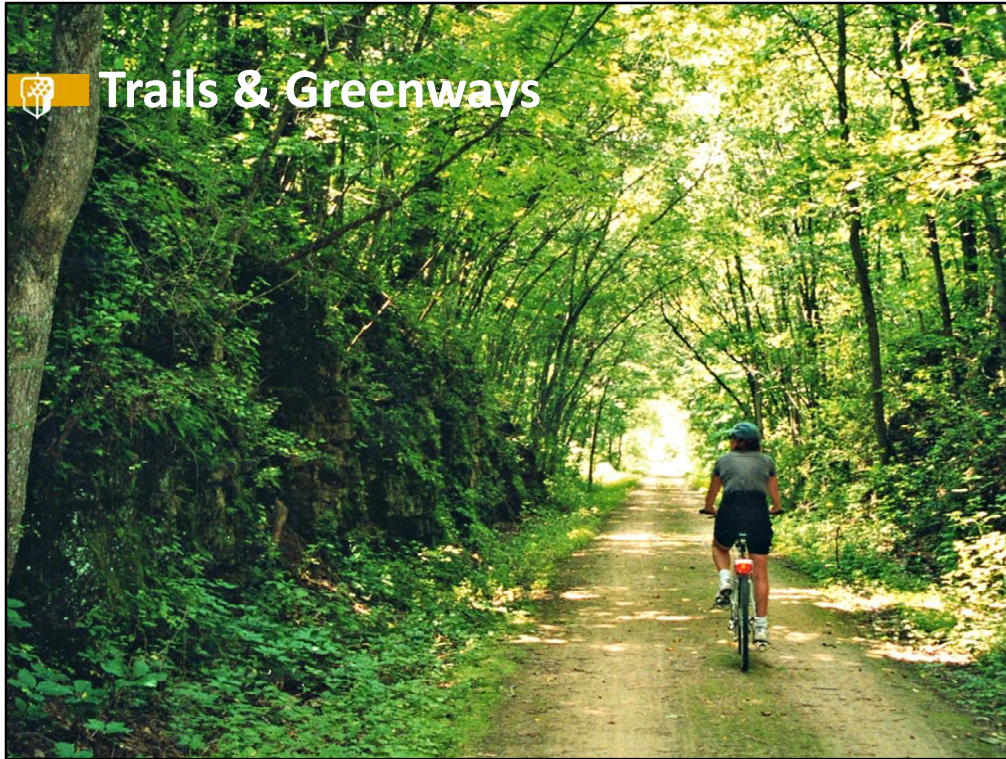
Conservation groups can and do purchase land at fair market value— though their acquisition funds are limited.





Pic: The Narrows Preserve, Dickinson Co.





INHF has been involved in trails work since nearly the beginning of our organizations history starting with projects like the Heritage Trail in Dubuque, the Cedar Valley Nature Trail in Cedar Falls, and the Wabash Trace Nature Trail southwest Iowa. We saw this work as a way to protect some of the last remaining prairie remnants in Iowa as well as a way to connect people to the outdoors.

As Abby mentioned, over the years INHF has partnered in the development of 65% of Iowa's Rail-Trails (nearly 700 miles of trails in total). We have helped to raise over \$25 million in public and private grants and donations for trails. We provide technical assistance to counties, cities, and other organizations in rail-trail acquisition and trail development. So what does that look like? Let's take you through the development of one of our most successful trail projects. While it is a fairly celebrated project the work we provided is typical of many of our other trails across the state.



Pics: Iowa Great Lakes, Monarch & Bumblebee, Wallace & Bowers

 **Policy**



Pics: Inside the Iowa capitol





Pic: Prescribed fire





Hire four crews of stewardship interns for the summer, as well as office interns that focus on grant writing, communications and design, and occasionally legal or trails



Pic: Volunteers at Karl Kahler prairie



Pic: Loess Hills



## Fundraising





 **Connect**

[www.INHF.org](http://www.INHF.org)  
[www.IowaLandOptions.org](http://www.IowaLandOptions.org)



**Iowa  
Natural Heritage  
Foundation**

Iowa Natural Heritage Foundation  
505 5<sup>th</sup> Ave, Suite 444  
Des Moines, Iowa 50309  
515-288-1846

